

Hallway
Lounge
12'9" x 10'2"
Bedroom
12'9" x 9'10"
Bathroom
6'6" x 4'11"
Kitchen
9'10" x 8'6"
Bedroom
10'2" x 8'6"
Ensuite
8'2" x 5'6"

TOTAL APPROX. FLOOR AREA 506 SQ.FT. (47.0 SQ.M.)
Whilst every attempt has been made to ensure the accuracy of the floor plan contained here, measurements of doors, windows, rooms and any other items are approximate and no responsibility is taken for any error, omission, or mis-statement. This plan is for illustrative purposes only and should be used as such by any prospective purchaser. The services, systems and appliances shown have not been tested and no guarantee as to their operability or efficiency can be given
Made with Metropix ©2018



BISHOPS CLOSE, WALTHAMSTOW
£2,100 Per Calendar Month
2 Bed Apartment

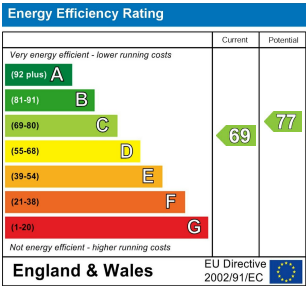


Features:

- Available January
- Two Bedrooms
- Two Bathrooms
- 1930s Conversion
- Well Presented
- Large Section Of Garden

A two bedroom, twin bathroom first floor apartment, ideal for a couple and sat right in the heart of Walthamstow Village. You have a private section of the garden with twin decks, a neutral kitchen with Smeg appliances, and the best bars and gastropubs for miles around right on your doorstep.

Bishop's Close is a green, leafy, peaceful cul de sac with resident's parking, friendly neighbours and a lot of cats.



E11, E7, E12 & E15
hello11@stowbrothers.com
0203 397 2222

E4 & N17
hello4@stowbrothers.com
0203 369 6444

E17 & E10
hello17@stowbrothers.com
0203 397 9797

E18 & IG8
hello18@stowbrothers.com
0203 369 1818

E8, E9, E5, N16, E3 & E2
hellohackney@stowbrothers.com
0208 520 3077

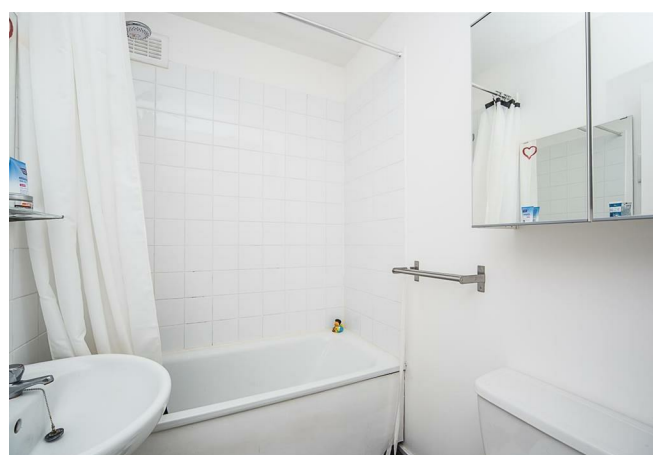
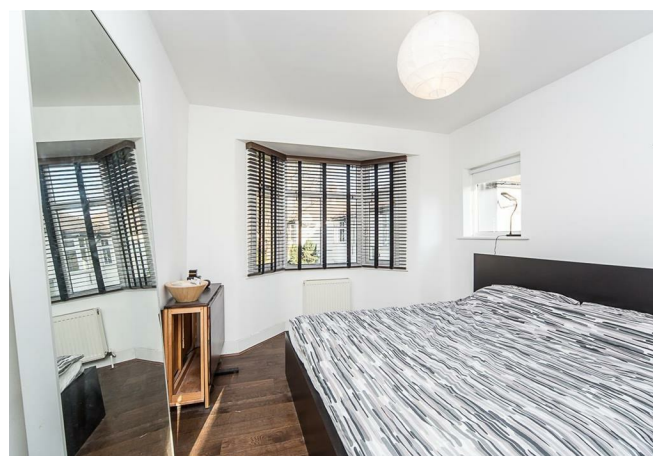
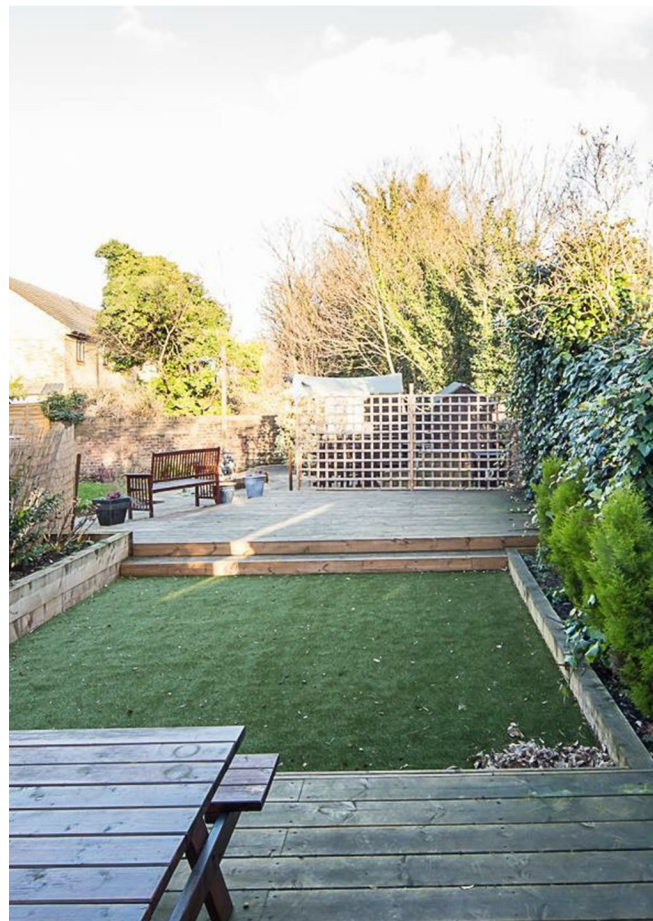
New Homes
newhomes@stowbrothers.com
0203 325 7227

Investment & Development
id@stowbrothers.com
0208 520 6220

Property Maintenance
propertymanagement@stowbrothers.com
0203 325 7228

STOWBROTHERS.COM
@STOWBROTHERS

REQUEST A VIEWING
0203 397 9797



IF YOU LIVED HERE

You'll be right in the middle of Walthamstow Village's peaceful part-pedestrianised streets, green spaces and historic architecture. Not to mention a great choice of superb bars, restaurants and gastropubs – from the cocktail cool of Eat17 to the traditional charms of The Nag's Head. There's something for everyone.

Inside you have engineered hardwood floors underfoot in the hallway, lounge and both

bedrooms. Your lounge totals 130 square foot, with plenty of natural light and peaceful views over the leafy close thanks to the large bay window.

Bedroom one is a solid double of 130 square feet, while bedroom two is a generous, ninety square foot single with en suite shower room. The recently refurbished kitchen has timber worktops, fitted Smeg appliances and a washer/dryer.



WHAT ELSE?

- Walthamstow Central station is also particularly handy; less than half a mile on foot for direct, twenty minute runs to Oxford Circus and Liverpool Street.
- Your rear garden consists of two large decks either side of a strip of zero-maintenance tru-lawn, plus sleeper beds and plenty of screening greenery.
- You have a boarded loft space for storage.

REQUEST A VIEWING
0203 397 9797

FOLLOW US ➡ @STOWBROTHERS
STOWBROTHERS.COM